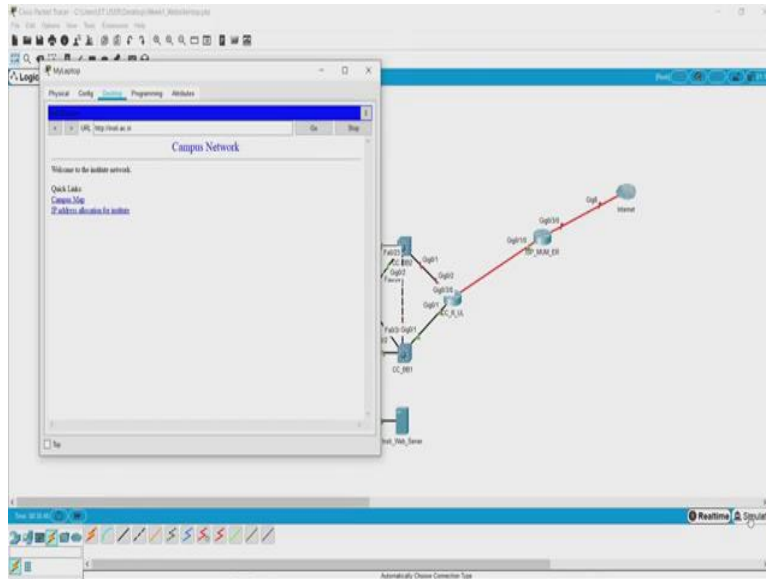


Demystifying Networking
Department of Computer Science and Engineering
Indian Institute of Technology, Bombay

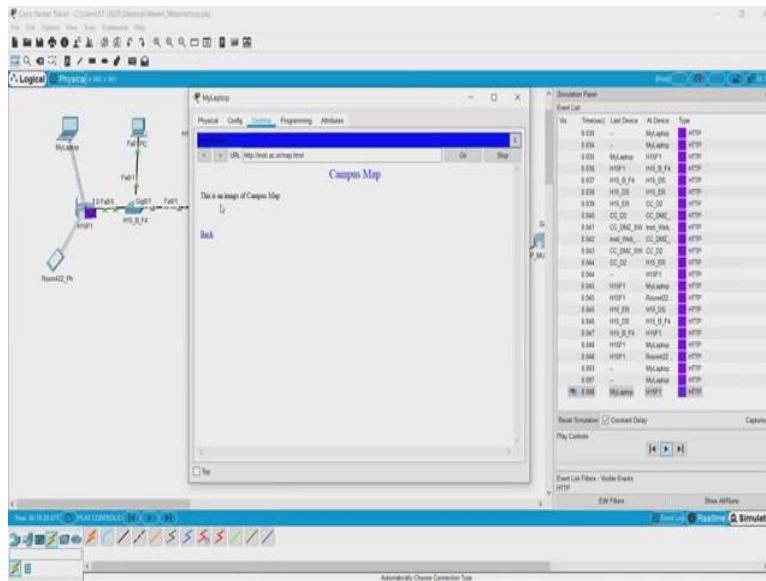
Lecture - 16
Loading the page in Simulation Mode

(Refer Slide Time: 00:01)



So, what we will do is from the real time mode, we will switch to simulation mode. So now, what we will see is the request for their website from our laptop going to the web server. So, let us go ahead and place that request. So, I will just press 'Go' again and now I will click on 'Play'.

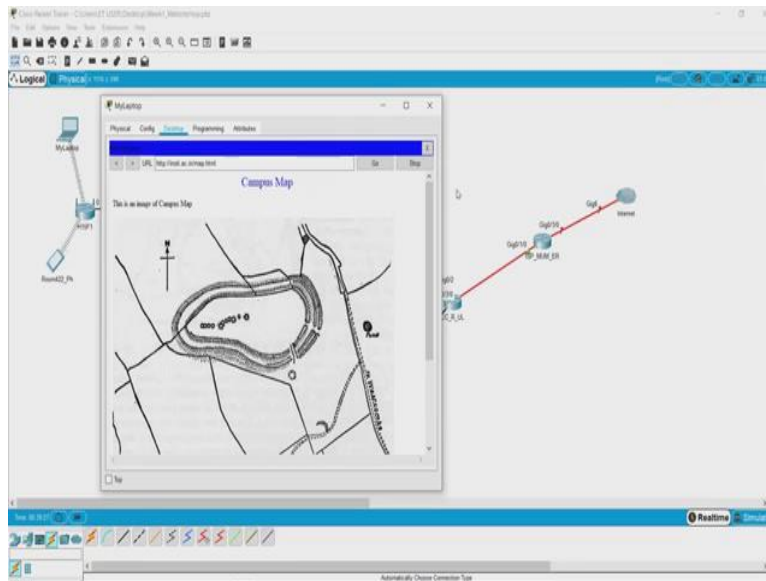
(Refer Slide Time: 01:29)



We see that the webpage has loaded, but the image is not loaded yet because the image is being communicated. Now, what you see is, there are number of packets, which are the small purple packets, which are leaving the web server and try trying to get to the laptop. So, what is happening here is, the image has been broken down into small fragments and these fragments are being sent to the laptop, one at a time.

So, all these segments are of a particular length. So, until and unless we are able to create the entire segmented form of the image, this communication keeps happening. So, what we will do is, let us switch to real time and see the image load. So, we have here switch to real time and what we see is the image has loaded.

(Refer Slide Time: 02:21)



So, now what we can do is, go back to the simulation mode and try to see what, are the different type of information that are available.