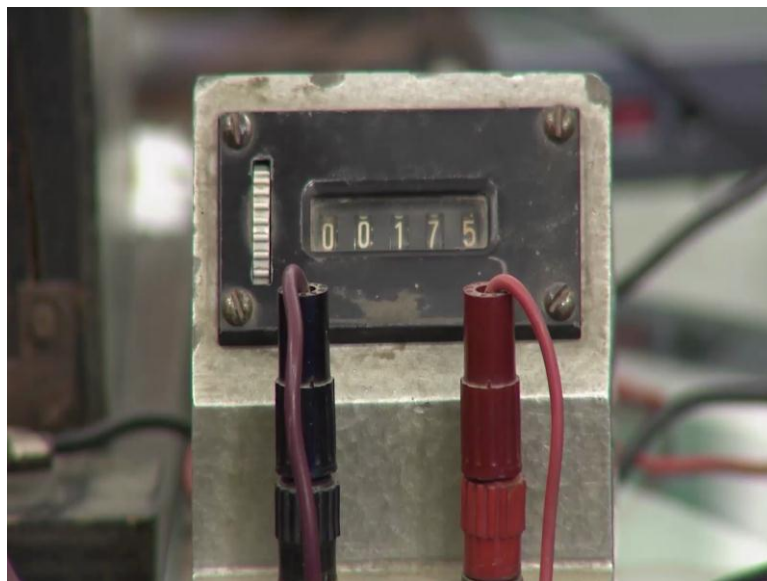


**Introduction to Psychology**  
**Prof. Braj Bhushan**  
**Department of Humanities and Social Sciences**  
**Indian Institute of Technology, Kanpur**

**Lab Session - 2**  
**Learning and Intelligence**

This is a mirror drawing operators, this is a pattern of a star which the person has to trace, but the person will has to see this image in the mirror and then trace. This cover is meant for this purpose that while sitting here the person is not able to see this star pattern and the person says it is image in the mirror. This is the (Refer Time: 00:33) by which we have to trace this star pattern without touching the walls of the pattern.

(Refer Slide Time: 00:14)



When we touch the wall it will be counted as error and this counter is meant for counting the errors which a person will make while tracing this star pattern. And that will happen when the (Refer Time: 00:21) will touch the edges of this star pattern.

Hello, I welcome you in this psychological experiment. This is a mirror drawing operators, you can see that in this mirror you can see the shape of a star and this is a (Refer Time: 01:07). what you have to do is to trace this star while looking into the

mirror. You just have to put this (Refer Time: 01:16) in the center and trace it like this in the middle without touching the walls.

If you touch the wall it will be considered as error. So, this is what you have to do first you will do it with your right hand then you will do it with the left hand and again by your right hand. So, have you understood what you have to do?

Student: Yes.

So, can we start now?

Student: Sure.

So, you can start from here, yes of in this center without touching the walls you have to trace it. You have to trace that star now, it is done. Fine so one trial is over right. Earlier you trace this star pattern with your right hand, now you have to trace this pattern with your left hand. And while trying not to touch the edges with the (Refer Time: 03:33). You can start now. Try to move the (Refer Time: 04:04) further. So, you have traced the pattern completely.

This is the Wais Wechsler adult intelligence scale which is used to evaluate intelligence of individuals who are aged 16 years and above. In this test there are two categories of test verbal as well as performance test. In verbal test we have information, comprehension, arithmetic similarities, and vocabulary. And in the performance test we have digit symbol, picture completion, block design picture arrangement and object assembly. Now, I will show you few of the performance tests of this battery.

Now this image is a part of our picture completion; over here the person has to look at the picture and find out what is the missing part in this image. For example, in this image the tail of the horse is missing. So the person has to say that the tail is missing. These blocks are part of the block design sub test of the battery as we can see that they have red white and half red and half white on different sides. The person is shown this card and

the person has to create an image like this with these blocks. For example over here like this we can recreate this image with these blocks.

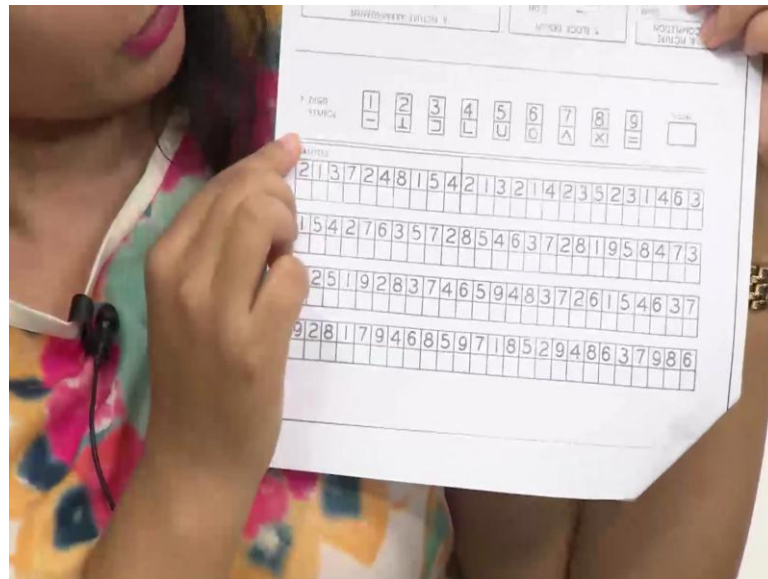
(Refer Slide Time: 07:55)



These cards are part of our picture arrangement sub test. Over here there are few images which tell us a story. The person has to rearrange this cards in a way that the all the card show a particular story. Like for example, in this case we can see that a body springing or straw to build a nest and then the bird has lay the eggs and then the bird is taking care of the newborn's.

These pieces are part of object assembly sub test. Over here the person is show given this basis and the person has to create a full image out of these pieces by putting them together. For example, these pieces can be put together in the form of mannequin, like this shown here.

(Refer Slide Time: 09:03)

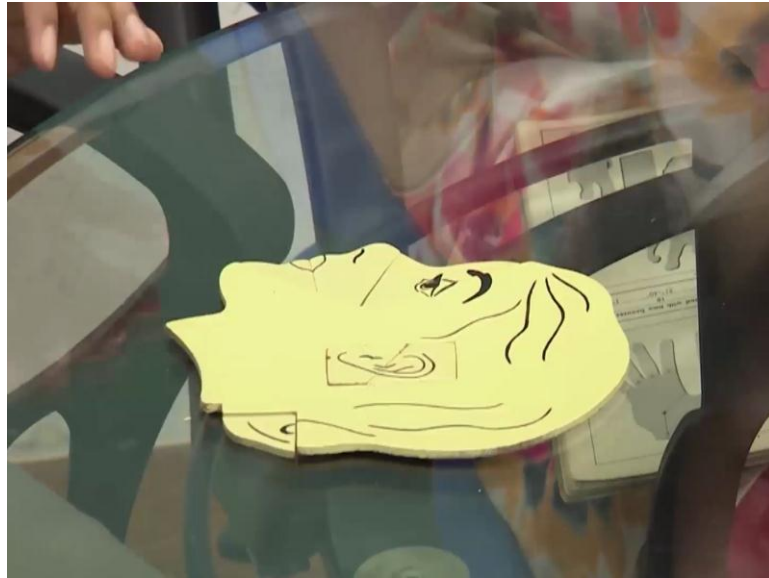


This is a digit symbol sub test, Over here we can see that with every digit some symbol is given and in these rows the person has to put on the corresponding symbols underneath the letter. For example, the symbol like this will come under 2 over here and the symbol like this will come under 3 over here.

In this test of object assembly we have given the pieces of the first test in to the participants in the given sequence. This is a sequence which is mentioned in the manual of this test, the participant has to put all these pieces in a complete figure. The time will be noted down with the stop watch and will be recorded in this record form. Now you have to put all these pieces together in such a way that they make a complete figure, that figure you will have to find out what kind of figure it is going to make. Fine so try to do it as soon as possible. So, start now.

We can say that the participant completed this figure of mannequin approximately 0.18 seconds which we will note down in this response sheet, over here object assembly.

(Refer Slide Time: 11:00)



Now, over here you have to put all these pieces together so that they make a meaningful image. So, please start. We can say that to complete this profile image the participant took approximately 1 minute and 14 seconds.